

Kia Ora, Kia Orana, Malo e Lelei, Fakaalofa Lahi Atu, Talofa Lava, Nǎ hǎo, Salut, Namaste, Bonjour, Bula Vinaka, Guten Tag, Goeie Dag, Shalom, Cześć, Hello, Cìào, おはよう (Ohayou), 안녕 Ahn Nyeong, Olá, Privet!, Xin Chào, Salam, Goedendag, Chom Reap Sour, ស្អប់ Suosdei, Ayubowan, Էլիէօ

Welcome to Term 2! Make sure you check out the calendar in this newsletter so you are aware of all the events and activities during Term 2.

You may have heard or seen in the news a story around an attempted abduction of a child walking home from Rowandale School, another school in Manurewa, earlier this week. It's a timely reminder that while events like this aren't frequent and we are fortunate in Wattle Downs to be a close safe community, we need to teach our children to be vigilant and make safe decisions. We don't want our children to live in fear of strangers (in fact, we often have to depend on strangers for help in life), it's important to discuss situations with your tamariki and set them up for dealing with tricky situations successfully. It sounds like the student from Rowandale did all the right things and this kept him safe.

It's a great idea for children to walk home with others such as a friend, neighbour or whānau member.

Things you might discuss with your children:

- How to listen to your gut instincts, if someone makes you feel uncomfortable, seek help and leave the situation immediately.
- To be alert to the environment around you as you walk or scooter, who is there, what are they doing?
- The route they take when walking, avoiding isolated places
- What to do if they are approached by someone and feel unsafe or scared e.g. they can make a lot of noise, confidently say no and run to a trusted adult
- That if something strange or scary happens on the way to school, let a teacher know as soon as you get to school. If something happens on the way home, let an adult at home know immediately. Help them understand that speaking up is vital, not only to keep themselves safe but potentially others as well.

This is a brief but clear [article](#) about teaching children to be safe around strangers. I also really like the concept of a circle of trust that this article shares <https://kiwifamilies.co.nz/dealing-with-stranger-danger/>

There are also lots of videos online that might help you talk with your child about what to do in a scary situation.

In the case of the student from Rowandale, he was able to give a clear description of both the person and their vehicle and hopefully this will support police investigations.

Ngā mihi,
nā Julie Cowan
Principal

WHAT'S INSIDE?

- Curriculum Update
- Pink Shirt Day/Kindness Cookies
- RTLB Information
- Orienteering Results
- Cultural Celebration Day
- Team Newsletters

Mauri tū mauri ora



*An active soul
is a healthy
soul*

Curriculum Update

Each newsletter our 'curriculum' section will have information about the new curriculum so we can take our whānau on the journey with us.

To keep up to date with what has been shared in this space over the year, please visit [previous newsletters on our website](#) for earlier information shared:

T1 Week 1 – What we are doing to implement the new English and Maths curriculum

T1 Week 3 – Differences between the new English and Maths curricula

T1 Week 5 – A focus on Maths

T1 Week 7 – Structured Literacy, Assessment and Reporting

Term 2 has started with several developments in the curriculum space.

Our Year 4–8 teachers and senior leadership team have started their structured literacy (BSLA from University of Canterbury) professional development this term. We are excited to be in the first cohort of BSLA for Years 4–8 as it builds on the years of work and research in Years 1–3. Since the government's requirement for all schools to use a structured literacy approach and have all teachers participate in professional learning, many providers of structured literacy have taken the opportunity to produce a professional learning package. We feel confident that our decision to work with a provider that has been delivering for several years, and is from a university where the work is research based is ensuring our teachers are getting high quality professional development. The professional learning they are doing actually gives them a university micro-credential, points they can use towards a post graduate or masters qualification. This high quality professional learning supports high quality teaching for our ākonga.

Teachers will be starting to use the BSLA assessment tools in the coming weeks and if you have a child in Te Awa or Te Moana you will receive a letter from University of Canterbury asking for permission to use your child's data in their research. In an upcoming newsletter I will provide more information about what structured literacy is looking like in Te Awa and Te Moana. Also today, as I write this, we have our maths facilitator on site working with our maths leaders and our colleagues from Greenmeadows Intermediate, Alfriston School and Manurewa Central School. She will be modelling lessons in our classes for teachers as part of this day.

This week the minister has announced the creation of a parent portal for parents to access information around the curriculum. Once I've explored this portal I will share more information around what you might find there and what might be of interest. I hope it will provide parent friendly information that supports you to feel confident that you understand what is being taught at school as well as ideas of things you can do to help your child in their learning and development.

We have also finally received some guidance around reporting to parents this week that the leadership team will be working through. Normally our mid year reports are in Term 2 but with the delay in getting this information and teachers needing to write reports based on new curriculum areas reports (for this year only) will be shared with you in conferences at the start of term 3. More information about what reporting will look like and the conferences will be coming in upcoming newsletters. We are also planning a parent information evening in week 7 (Week starting 9th June) that will contain information around reporting; we hope to see lots of you there!

Pink Shirt Day/Kindness Cookies

We invite all students to support Pink Shirt Day next Friday, May 16.

Pink Shirt Day is about reducing bullying by celebrating diversity in all its forms and supporting schools, workplaces, and communities to be safe, supportive, welcoming and inclusive.

You can purchase the official Pink Shirt Day tee from Cotton On stores and online. This year, Cotton On has launched an option to purchase a 'Donation Tee' to pass on to someone who can't buy their own. If you'd like to purchase a tee for yourself or someone else, tap here:

<https://bit.ly/4cFfVh0>. You don't have to wear the official T-Shirt, but if not wearing uniform, students do have to wear pink!

Our student council has planned a special way to promote kindness on Pink Shirt Day, through their "Kindness Cookies" initiative.

Please see the poster below for all the details.

To enable the right number of cookies to be made, orders close Tuesday May 13 at 12 pm, for delivery on Pink Shirt Day.

Council Kindness Cookies



\$2.50 per cookie

Buy one for yourself
AND/OR gift one to
someone else

All money raised will go to the Pink Shirt
Day Charity (Mental Health Foundation)



STOP BULLYING

Order by Tuesday 13th May
for delivery on
Friday 16 May
(Pink Shirt Day)

Pre-Order on Kindo only
If gifting, you can say to whom
and why!



Organised by the Reremoana
School Student Council

Welcome Back!

After visiting her homeland and family since the end of last year, Whaea Gloria Jahan has returned just in time to take on the position of second teacher in Te Puna iti. We are delighted to have Whaea Gloria's smiling face back at Reremoana!.

As Te Puna iti fills up across the term, Whaea Gloria will take a class across to Te Puna 2, and Whaea Sarah Hutchinson will continue as new entrant/reception teacher.

Children Turning 5

If your child is turning 5 and going to be starting at Reremoana School this year please make sure you have let the office know and enrolled. Our term 3 and 4 start dates are

- Term 3 – 14 July or 18 August.
- Term 4 – 6 October or 10 November.

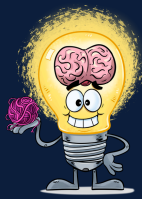
Email office@reremoana.school.nz for the enrolment form.



SCHOOL PHOTOS 16 SEPT

*School photos 16th September
Save the date.*

*If you do not want your child to have their photo taken
please let Helen in the office know
helenh@reremoana.school.nz*



Be Resilient.....Be Collaborative.....Be Creative.....Be Respectful.....Be A Contributor.....Be A Thinker

RTL B Service Information

The RTL B service is one of the supports we can access to assist students in overcoming learning obstacles. This information has been provided by our local cluster:



RTL B CLUSTER 12

RESOURCE TEACHERS OF LEARNING AND BEHAVIOUR

TE HUNINGA RAUKURA KI MANUREWA

Information for Parents, Caregivers and Whānau

Whakatauki
E kore e tāea e te whenu
kōtahi
ki te raranga i te whāriki.
Kia mōhio tātou ki a tātou,
Mā te mahi o ngā whenu,
mā te mahi o ngā
kairaranga,
ka oti tēnei whāriki.

The tapestry of
understanding
can not be woven by one
strand alone.
It takes the working together
of strands,
And the working together of
weavers
to complete such a tapestry.

Na Kukupa Tirikatene

Resource Teachers of Learning & Behaviour (RTL B) are educators equipped with specialized training and postgraduate qualifications. Our mission is to assist schools, teachers, and students by offering customized strategies and planning aimed at helping students overcome learning obstacles. We work in partnership with teachers, whānau (families), and other professionals to enhance student engagement, inclusion, and achievement.

Once you have completed a consent form for your child's referral, the school will submit the request to our service, and we will assign an RTL B. The RTL B will reach out to parents as soon as we begin working with the student. If you have any concerns regarding your child, feel free to request the school to initiate a referral to RTL B.

TREATY OF WAITANGI
Partnership by working effectively with iwi and other Māori providers.

Protection by valuing children as taonga.

Participation by ensuring whānau have the opportunity to participate in the process.

AS WHANAU YOU CAN:
Take time to talk with your child about their learning.

Attend meetings with RTL B, the school, and other agencies to work together and plan for your child.

Be part of the decision-making team and help to set goals for your child.



He Pikorua

Our Practice Framework

WHAKAWHĀUNGATANGA
WE WILL MAKE CONTACT AND BUILD CONNECTIONS WITH EVERYONE AROUND THE CHILD.

KOHIKOHI
WE GATHER INFORMATION TO GAIN A DEEPER UNDERSTANDING.

ĀTA WHAKAARO
WE WORK TOGETHER AND LOOK AT ALL THE INFORMATION WITH OPEN MINDS.

TĀTAI
WE ALL MAKE A PLAN TOGETHER WITH AGREED GOALS.

WHAKAMAHI
WE TAKE ACTION AND CELEBRATE IMPROVEMENTS AND MAKE CHANGES AS NEEDED.

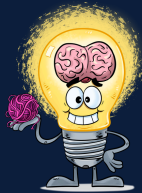
WHAIWHAKAARO
WE REVIEW WHAT WE HAVE ACHIEVED.

MANA MOTUHAKA
WE ACKNOWLEDGE CONTRIBUTIONS AND CREATE A PLAN TO MOVE FORWARD.

RTL B Cluster 12 are proud to serve and support the 34 vibrant, innovative schools in the Manurewa area of Auckland City. Our Lead School is Manurewa East School, and all RTL B are based there.

Website
<https://rtlb12.school.nz>

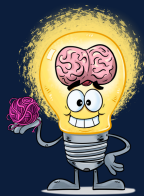
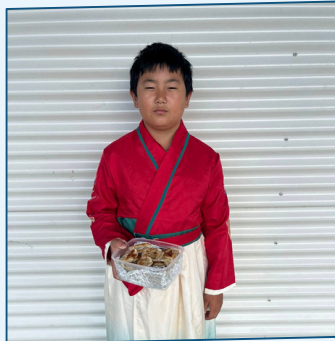
CONTACT DETAILS
Sarah Gilfillan Cluster Manager
s.gilfillan@rtlbcluster12.school.nz
0276663265
Stacey Dixon Admin Manager
rtlb.admin@rtlbcluster12.school.nz



Be Resilient.....Be Collaborative.....Be Creative.....Be Respectful.....Be A Contributor.....Be A Thinker

Cultural Celebration Day

What a wonderful day we had in the last week of term, celebrating a range of cultures that we have at Reremoana School. Run by our student council, we had a 'fashion parade' in the hall to see all the amazing clothes. With the opportunity for families to share favourite recipes and cultural food, it sure was a day to remember!



Be Resilient.....Be Collaborative.....Be Creative.....Be Respectful.....Be A Contributor.....Be A Thinker

Sports Update - Orienteering

On Thursday May 1st, 36 of our students took part in the MPSSA/Counties Orienteering event held at the Auckland Botanical Gardens. Our teams performed exceptionally well braving the weather, with the Year 7 Boys, Year 7 Girls, and Year 8 Girls all qualifying for the Auckland Championships at Moire Park on May 14th.

Congratulations to the following teams and students who achieved top 4 finishes on the day.

Stand out team results

Year 5/6 Girls team - first place

Year 7 Boys team - first place

Year 7 Girls team - second place

Year 8 Girls team - second place

Stand out individual results

Year 8 girls

Ariel C - 1st on her course

Zianne B - 1st on her course

Ema-Rayne W - 2nd on her course

Amanda S - 2nd on her course

Lexana T - 4th on her course

Year 8 Boys

Vereniki C - 4th on his course

Year 7 Girls

Sophie J - 1st on her course

Ruby C - 2nd on her course

Savannah F - 3rd on her course

Year 7 boys

Riley B - 1st on his course

Rex C - 1st on his course

James B - 3rd on his course

Year 5/6 girls

Jennifer W- 1st on her course

Leila P - 1st on her course

Sarah R - 2nd on her course

Ria S- 2nd on her course

Maishashree G - 1st on her course

Yiyan Z - 1st on her course.

Year 5/6 Boys

Joe R - 4th on his course

Donevyn T - 4th on his course.



A huge thanks to coach Miss Jorien Fourie for training our students both in her PE lessons and out, to enable them to achieve such outstanding results. All the best to the 18 Y7/8 students who have qualified for next week's Auckland Champs!

Team Newsletters

Team newsletters for Term 2 have been shared via HERO and are also available by the following links:

[Te Moana Term 2 Newsletter](#)

[Te Awa Term 2 Newsletter](#)

[Te Puna Term 2 Newsletter](#)

Term 2 Important Dates

Updated Weekly

	Monday	Tuesday	Wednesday	Thursday	Friday
Week 2 5-9 May				Y7/8 Tech	Mothers Day High Tea
Week 3 12-16 May <i>Life Ed Van</i>			Matariki Whānau Hui 6-7:30pm in the Staff Room	Y7/8 Tech	Pink Shirt Day Kindness Cookie Day
Week 4 19-23 May <i>Life Ed Van</i>			MPSSA Football	Y7/8 Tech	
Week 5 26-30 May		National Young Leaders Day		Y7/8 Tech	
Week 6 2-6 June	King's Birthday	MoE Teacher Only Day		Y7/8 Tech	
Week 7 9-13 June <i>Ice Skating Tour</i>				Y7/8 Tech	
Week 8 16-20 June	School Cross Country			Y7/8 Tech School Matariki Event	Matariki
Week 9 23-27 June	Children's University Discovery Day			Y7/8 Tech	Term 2 ends

Board of Trustees News

Kia ora Reremoana School Community,

Thank you to everyone who responded to the recent correspondence regarding a possible by-election for our Board of Trustees.

We appreciated the feedback and interest. The number of responses received did not meet the 10% threshold of school families required to trigger a by-election.

Therefore the current vacancy has been filled with an appointed parent representative, the approach supported by the majority. See below for the introduction to our new board member.

Looking ahead, 2025 is an election year for school boards. In Term 3, you'll have the opportunity to vote for the new school board who will serve a three-year term. We strongly encourage everyone to take part in the election process.

If you or someone you know is interested in joining the board, I'd be happy to have a conversation and answer any questions. Being a board member is a real privilege — it's a chance to understand the challenges our school faces and to help shape its direction through effective governance.

Please don't hesitate to reach out if you'd like to learn more.

Ngā mihi nui,
Adam Manukau
Presiding Member
Reremoana School Board

Reremoana School Board

Meet Our New Board Member – Govind Shaw

We are pleased to introduce Govind Shaw, who I am sure will be a dedicated member of our Reremoana School Board

Govind is a Chartered Accountant with over 14 years of experience in senior finance roles across both the corporate and public sectors. He brings strong expertise in governance, strategic planning, and financial stewardship to our board.

Throughout his career, he has led diverse teams, managed multi-million-dollar budgets, and driven accountability in complex environments.

As a parent of two primary-aged children, Govind is deeply invested in the success of our school. He offers a balanced perspective — combining financial acumen with a genuine commitment to student wellbeing and high-quality educational outcomes.

We are grateful to have Govind's leadership and dedication supporting Reremoana School.

If you see Govind around school, please give him a warm welcome!

